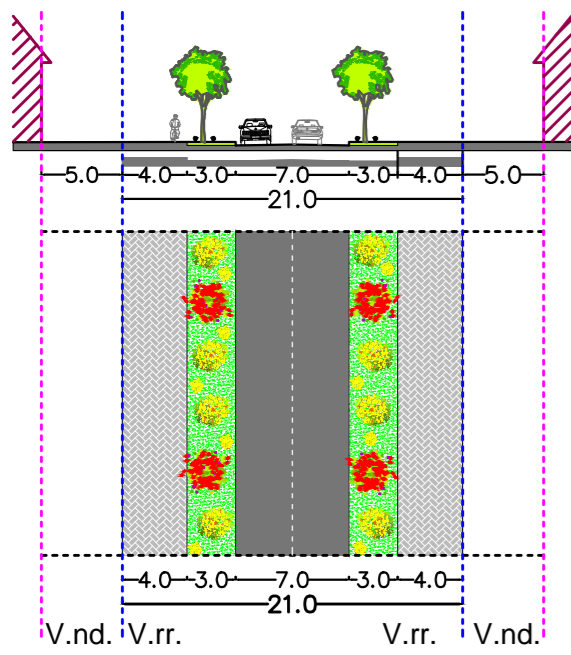
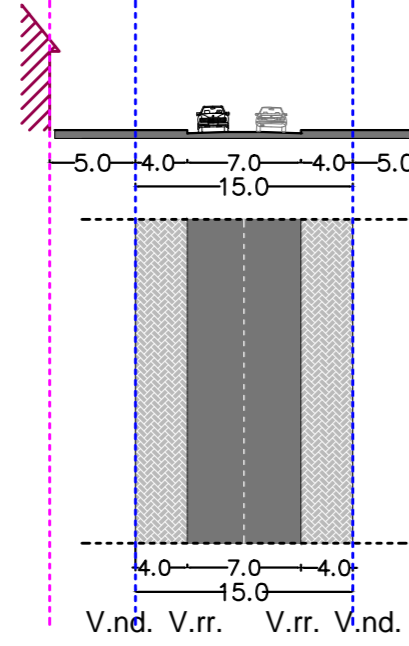


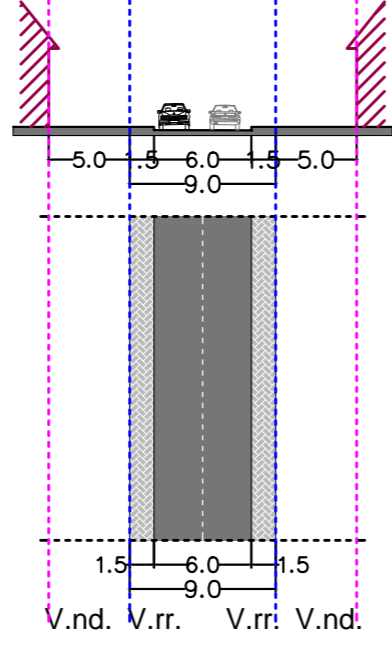
PRERJA A-A



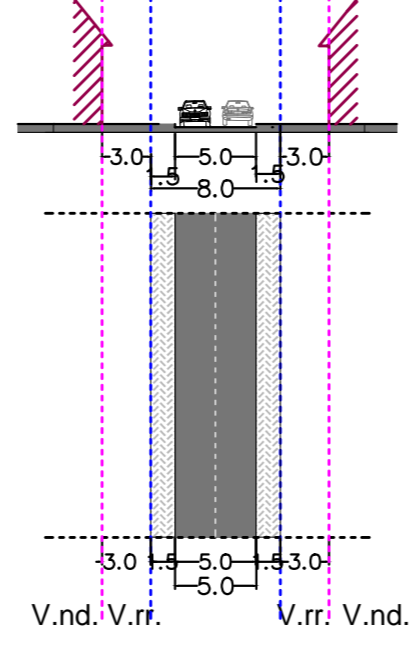
PRERJA B-B



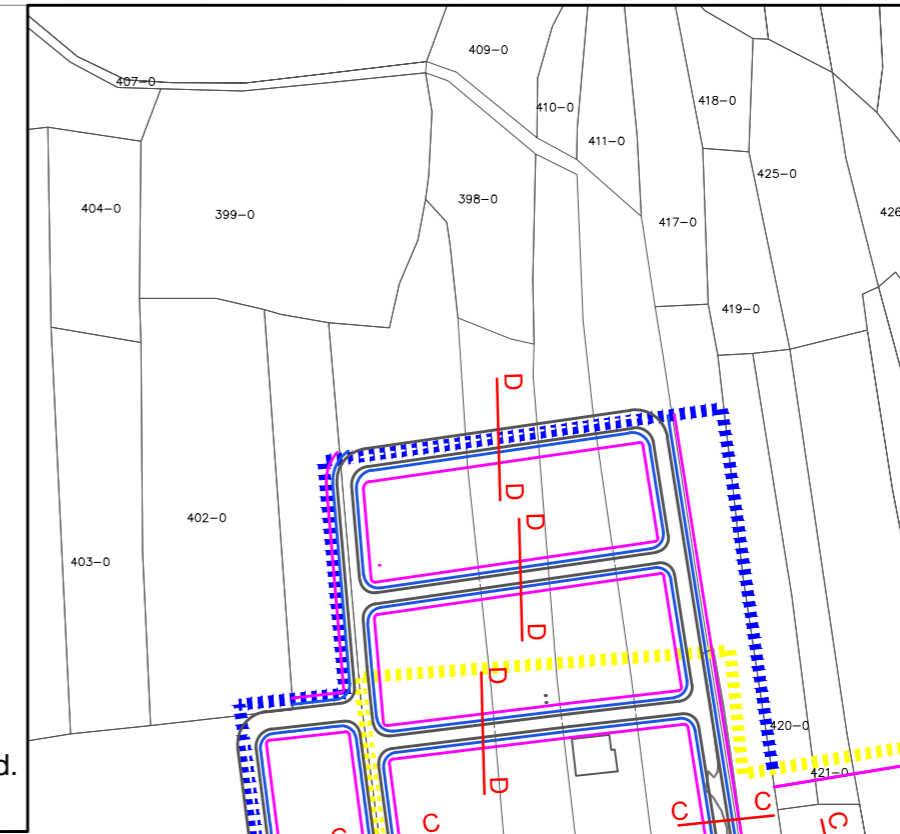
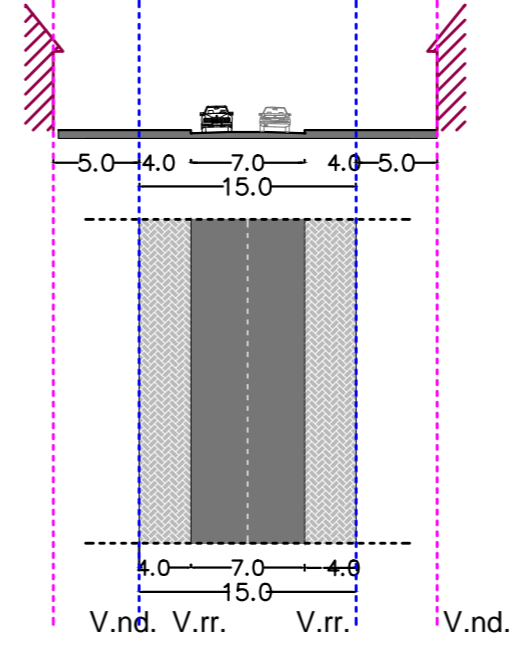
PRERJA C-C



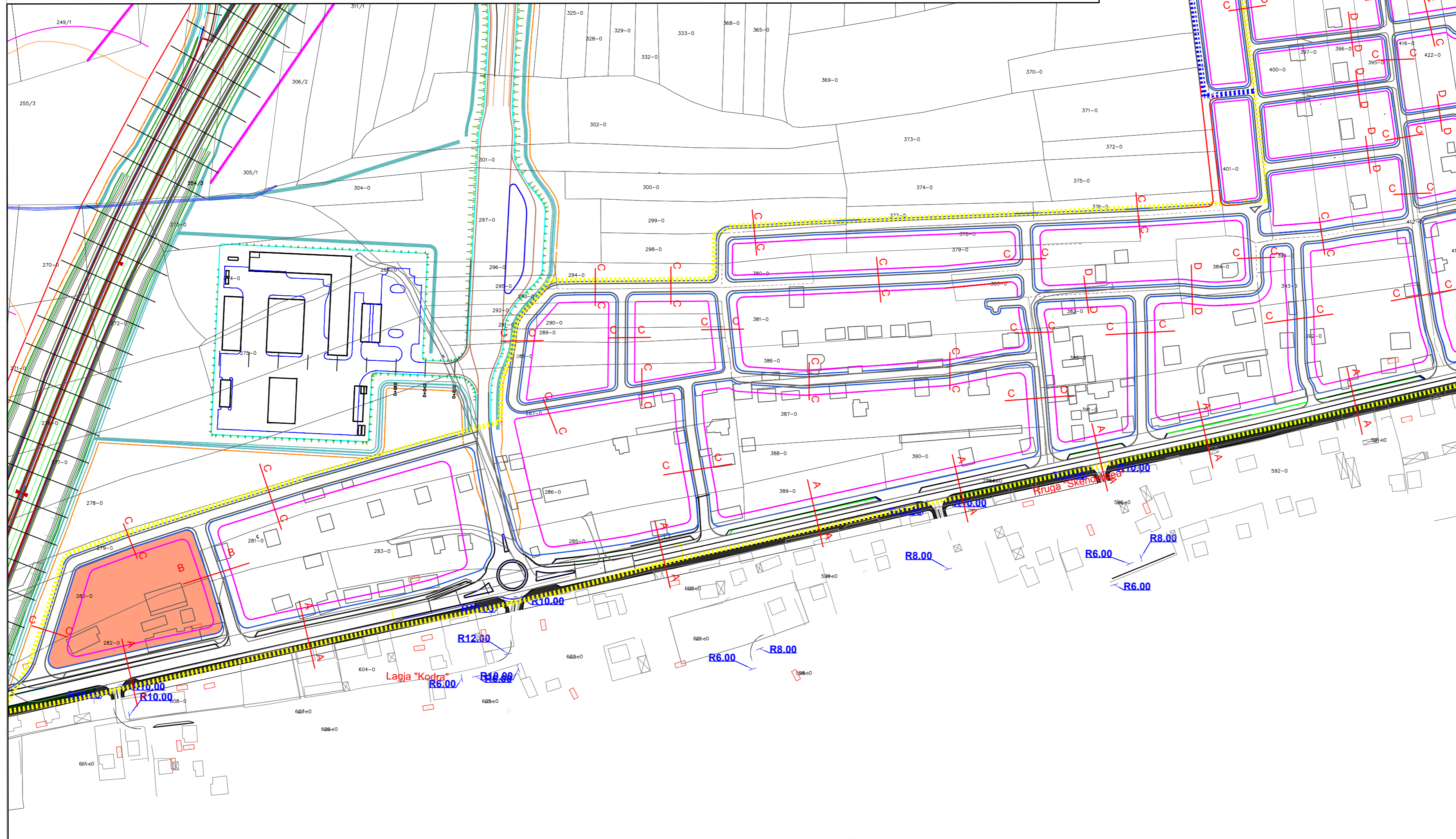
PRERJA D-D



PRERJA E-E



- Vija ndertimore
- Vija rregullative
- Autoudha Ibrahim RUGova
- Rruge te planifikuara
- Rruget e planifikuara te lagjes Pojata
- Kufiri i lagjes Rosule
- Pozite e mundshme per ndalesa te transportit publik Rreze 400 m



REPUBLIKA E KOSOVES
KOMUNA E SUHAREKES

PLANI I HOLLESISEM I LAGJES ROSULE

PERMBAJTJA E FLETES:
INFRASTRUKTURA RRUGORE / 1

FAZA:
ZGJIDHJA URBANE

SHKALLA:
1:2000

KODI:
PRrU_R

NIFLETES:
07

A design
DISEJNI I PLANIFIKIMIT URBANETIK DHE ARCHITETURE
Adresa: Rr. "Reshep Shema" Nr. 2
10000 Prishtine

VERETON
DIREKTOR I DREKTORATIT PER URBANIZEM, PLANIFIKIM DHE MUJES
KUSHTRIM KICAJ
KRYETARI I KOMINES SE SUHAREKES

Pishllim,
Qershor 2018.